

MITSUBISHI FORKLIFT TRUCKS GIVES YOU MORE

Mitsubishi **GRENDIA MX** *FD60-70 N-Series Forklift Trucks*

TECHNOLOGY WITH THE POWER TO DELIVER

Available in 2 different models with capacities ranging from 6 and 7 tons, Mitsubishi heavy duty diesel counterbalance forklift trucks are built to deliver sturdy, energy efficient and remarkable performance to satisfy your application needs.

Grendia MX series forklift trucks provide high level drivers' comfort, smooth lifting and an excellent all round visibility. It is a dynamic truck that combines both revolutionary cutting edge technologies with excellent engineering back up to optimize your productivity, and empower you the strength to perform.



* Picture above is for illustration purpose only.
Please contact your local dealers for more information.

SAFETY FIRST

Whatever your application... from timber to metals, construction materials to dockyards, container handling to airfreight, Mitsubishi forklift trucks can deliver the muscle to handle the job.

Mitsubishi forklift trucks possess the world class standard to offer you the remarkable operating experience. Excellent lateral stability, magnificent robust structure and the ability to exercise strength to perform in any conditions are the distinctive qualities that define FD60-70 N-series forklift trucks to be probably one of the best in the logistic world.



1. INTEGRATED PRESENCE SYSTEM - "IPS"

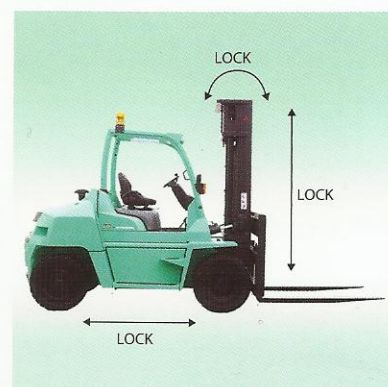
Grendia MX is fitted with Mitsubishi IPS, an integrated active safety system designed to improve vehicle safety. It not only ensures safety during vehicle operation but also prevents errors when the operator is not seated, protecting both the operator and the workplace from potential accidents.



2. MAST AND TRAVEL INTERLOCK

Mitsubishi Grendia MX forklift trucks are equipped with mast and travel interlock protection device that is linked to the operator's seat. If the operator is not seated, the mast and (for torque-converter models) the movement of the vehicle itself, is automatically deactivated in order to prevent injury or damage to property.

* Note that brakes are not applied in travel interlocking, so trucks can still move on slopes due to gravity.



3. LIFT LOCK

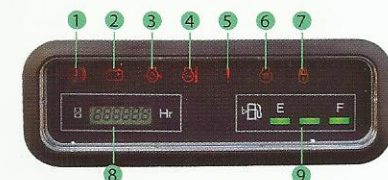
When the ignition switch is at off position, all forks movement will cease immediately even if it is at elevated position. Forks position will still remain in place despite of the control levers are accidentally bumped or moved. Thus, this lift lock function protects the operator from any potential threat which could result from human error.



4. INTEGRATED LED MONITOR

The monitor offers distinct and easy to interpret warning symbols that indicate the truck current status with bright LED lamp

- 1.) Parking Brake Warning Lamp
- 2.) Battery Charge Warning Lamp
- 3.) Engine Oil Pressure Warning Lamp
- 4.) Water Temperature
- 5.) Multipurpose Warning Lamp



- 6.) Glow Plug Indication Lamp
- 7.) Interlock Indicator Lamp
- 8.) Hour MEter
- 9.) Fuel Gauge

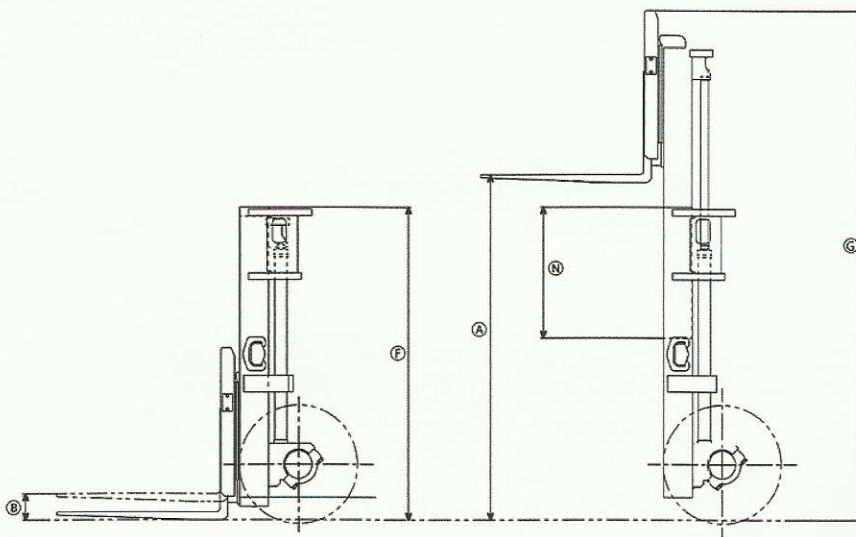
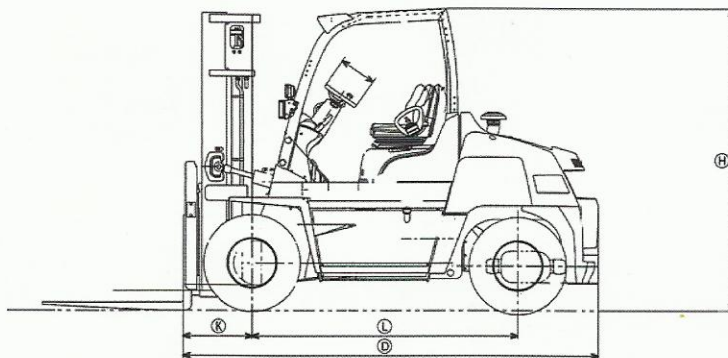
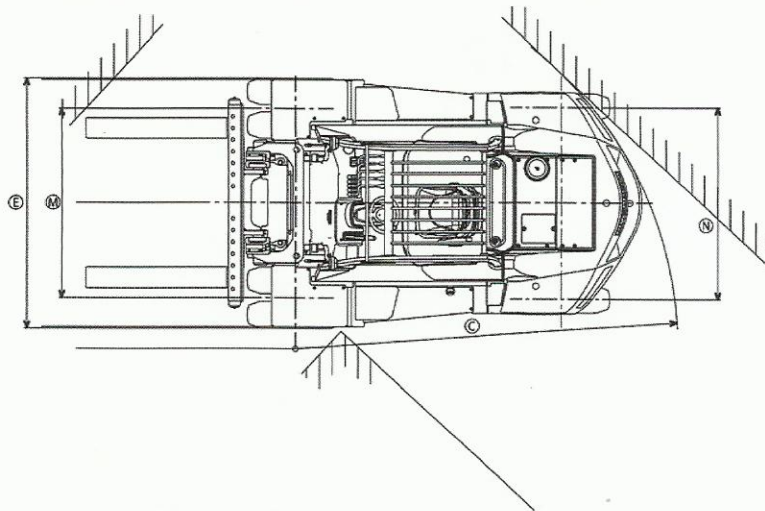
5. ASBESTOS FREE DUO SERVO DRUM BRAKES

Asbestos fibers are know to bo hazardous to human health. That is why our brake drums are made to be asbestos free for better health and environment. The self adjusting brakes also ensure all time effective braking that further enhance a safer and hazardous free driving experience.

CENTRALIZED MAINTENANCE AREA

The N-generation series forklift trucks have an engine cover that opens fully along with easy-to-remove side panels without the needs of any tools. The floor plate and radiator cover can be easily removed for even greater accessibility. The maintenance points are easy to access and they are strategically placed to allow quick inspection or maintenance. Downtime of the forklift is reduced without the need to move around.





OPTIONS

1. Rear mirror kit
2. Rubber floor mat
3. Upper Exhaust
4. Rotating Lamp
5. Choice of masts
6. Sideshift and Fork positioner
7. Air intake options
8. Hook and shaft-type carriages
9. Working lights

SPECIFICATIONS

Characteristics						
1	Type of Truck				DIESEL ENGINE TRUCK	
2	Model				FD60NM	FD70NM
3	Loading Capacity		kg		6000	7000
4	Load Center		mm		600	
Performance						
5	Maximum Fork Height	2SP33	mm	A	3000	
6	Free Fork Height		mm	B	215	
7	Speeds	Lifting	Loaded	mm/s	440	
			Unloaded	mm/s	470	
		Lowering	Loaded	mm/s	500	
			Unloaded	mm/s	450	
8	Tilt	Mast	Forward	deg	6	
			Backward	deg	12	
9	Speeds	Traveling	Loaded	km/h	22	
			Unloaded	km/h	28	
10	Maximum Drawbar Pull Drawbar Pull	stationary on slope at 1.6km/h	Loaded	kN	50	
			Loaded	kN	37	
11	Maximum Gradeability Gradeability	stationary on slope at 1.6km/h	Loaded	%	33	
			Loaded	%	24	
12	Turning Radius		mm	C	3310	
13	Practical Intersecting Aisle Width		mm		2930	
Dimensions						
14	Overall Length to Fork Face		mm	D	3592	
15	Width	with Standard Tires	mm	E	2173	
16	Height	with Lowered Mast	mm	F	2575	
		with Extended Mast (with backrest) to top of Overhead Guard	mm	G	4285	
			mm	H	2610	
17	Forks (Thickness x Width x Length)		mm		70x150x1220	
18	Forks Spread (Out-to-Out Minimum / Maximum)		mm		350 - 1700	
19	Front Overhang (Center of Front Axle to Fork Face)		mm	K	597	
20	Wheelbase		mm	L	2300	
21	Tread Width	Front, standard Tires	mm	M	1650	
		Rear, Tires	mm	N	1650	
22	Ground Clearance	at Lowest point mast at Center of Wheelbase	mm		170	
			mm		263	
23	Tire Size	Front	mm		8.25-15-12PR(I)	
		Rear	mm		8.25-15-12PR(I)	
Weight						
24	Machine Weight		kg		8760	9410
Brake						
25	Service Brake Type				Hydraulic with vacuum boost	
26	Parking Brake Type				Mechanical	
Power Train						
27	Engine	Model			S6S	
		Max. Rated Power/rpm to DIN70020	kW/rpm		67.7/2300	
		Max. Rated Torque/rpm to DIN70020	Nm/rpm		290/1600	
		Displacement	cc		4996	
		Fuel Tank Capacity	L		130	
28	Transmission	Type			Powershift	
		Forward			2 speed	
		Backward			2 speed	
29	Relief of Pressure	For Attachments	Mpa		19.1	



Ready to Perform
To Your Applications

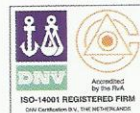
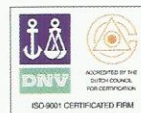


www.mitforklift.com.sg

© 2014 by MCFS. All rights reserved. All registered trademarks are the property of their respective owners. Printed in Singapore.

FMIT0123

02/14



PRESENTED BY :

Note: Performance specifications may vary depending on standard manufacturing tolerances, vehicle condition, types of tyres, floor or surface conditions, applications or operating environment. Trucks may be shown with non-standard options. Specific performance requirements and locally available configurations should be discussed with your Mitsubishi forklift truck dealers. Mitsubishi Forklift Trucks follow a policy of continual product improvement. For this reason, some materials, options and specifications could change without notice.